



**UNDERGROUND CONSTRUCTION TECHNOLOGY  
INTERNATIONAL CONFERENCE & EXHIBITION  
JANUARY 19-21, 2010  
TAMPA, FLORIDA**

**REHAB OF 100 YEAR OLD BRICK STORM SEWER**

Authors: Datta Shirodkar, P.E. – Project Manager– Boyer Inc.  
Michael Spero, P.E. – President - Danby LLC

**Abstract**

This successful project involved the rehabilitation of a 100 year old 90-inch diameter brick storm sewer beneath a new building under construction in a commercial area of Washington, DC. The project overcame numerous challenges including; tidal influenced backwater, limited site access and lay down area, lining around a short radius curve and confined space and storm inundation issues. There were also numerous unanticipated problems that had to be resolved. A Grouted-In- Place Lining System (GIPL) was selected to provide structural rehabilitation, a water tight and corrosion resistant lining and improved flow capacity.

**Introduction**

This presentation will be a case history of the rehabilitation of an aged brick sewer. This should have been a relatively simple project with a few significant yet manageable challenges, but it turned into the “Job from Hell”. We will explain why the project was needed, how it progressed, how some things went sour and how these challenges were overcome.

**Project Description**

This sewer rehabilitation project is located in the southwest sector of Washington, DC. What was at one time the USEPA building was demolished and the site is being developed for mixed use. The Waterfront Mall Project will contain retail stores, restaurants, offices and residential units. Through the middle of the site there is an existing 90” diameter storm sewer about 800 feet long. This pipe is over 100 years old. About half of the length of pipe is all brick, consisting of 3 layers. The other half of the length has the bottom part of the pipe constructed of brick (below the spring line) and the upper half is unreinforced concrete. The pipe makes one 90 degree short radius bend about mid length. The sewer is now a storm drain but previously it was a combined sewer. It empties into the Potomac River about 1,000 feet downstream of the project

site. The sewer is owned and maintained by the District of Columbia Water and Sewer Authority (DCWASA). The new development included the proposed construction of a building and a parking garage over the existing sewer. Although the sewer was in relatively good condition, especially after 100 years of service, DCWASA requested that the sewer be rehabilitated by the developer. This was primarily due to the fact that access to the pipe would be severely limited after the buildings were constructed which would diminish the ability of the Owner to maintain or repair the sewer.

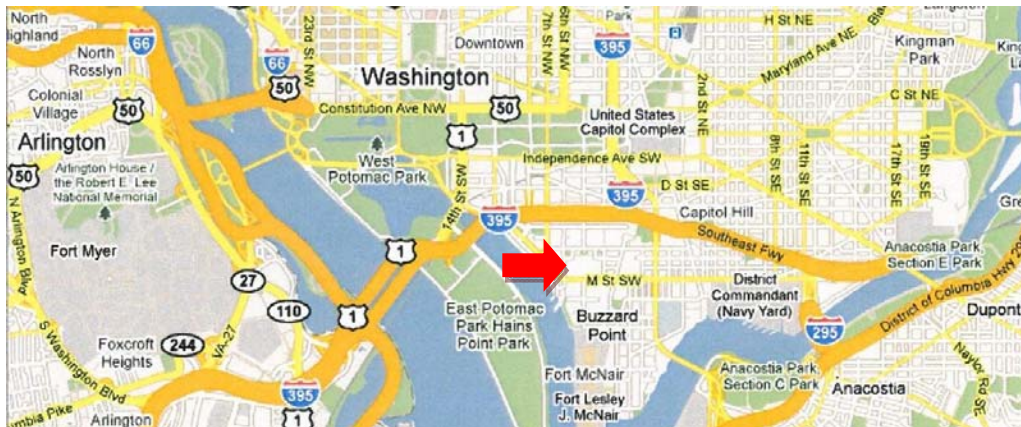
It was decided to use the Danby lining system to rehab the sewer. This is a Grouted-In-Place-Liner (GIPL) which has proven experience in the U.S. for over 20 years and worldwide for over 25. This lining system consists of 12" wide PVC panels delivered to the site in 300 foot coils of the material. This is a man-entry system so the pipe needed to be dry. Access to the pipe interior was relatively good since there were existing manholes at the upstream and downstream limits of the rehab section. A new manhole about midway had been constructed. The installation contractor is Boyer, Inc. of Houston, Texas.

### **Anticipated Challenges**

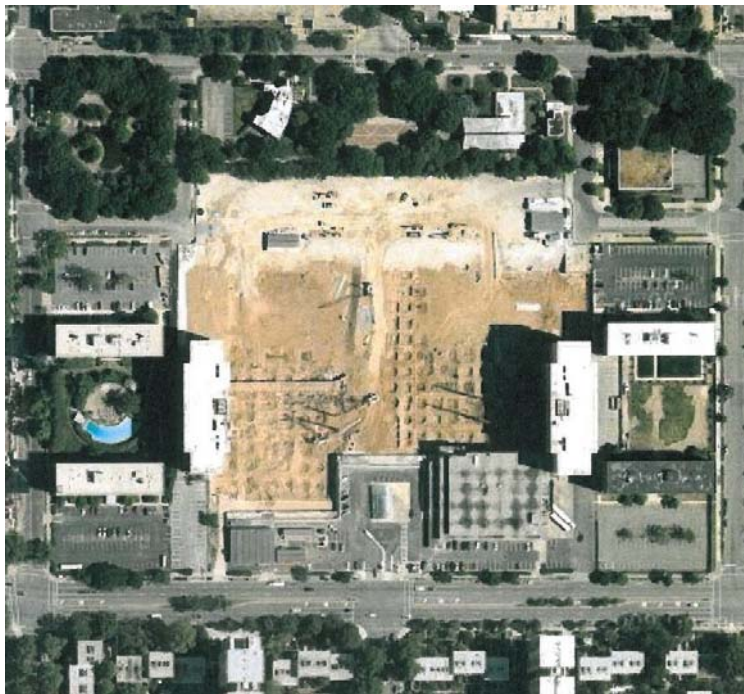
Although this was a relatively straight forward job, there were several challenges identified.

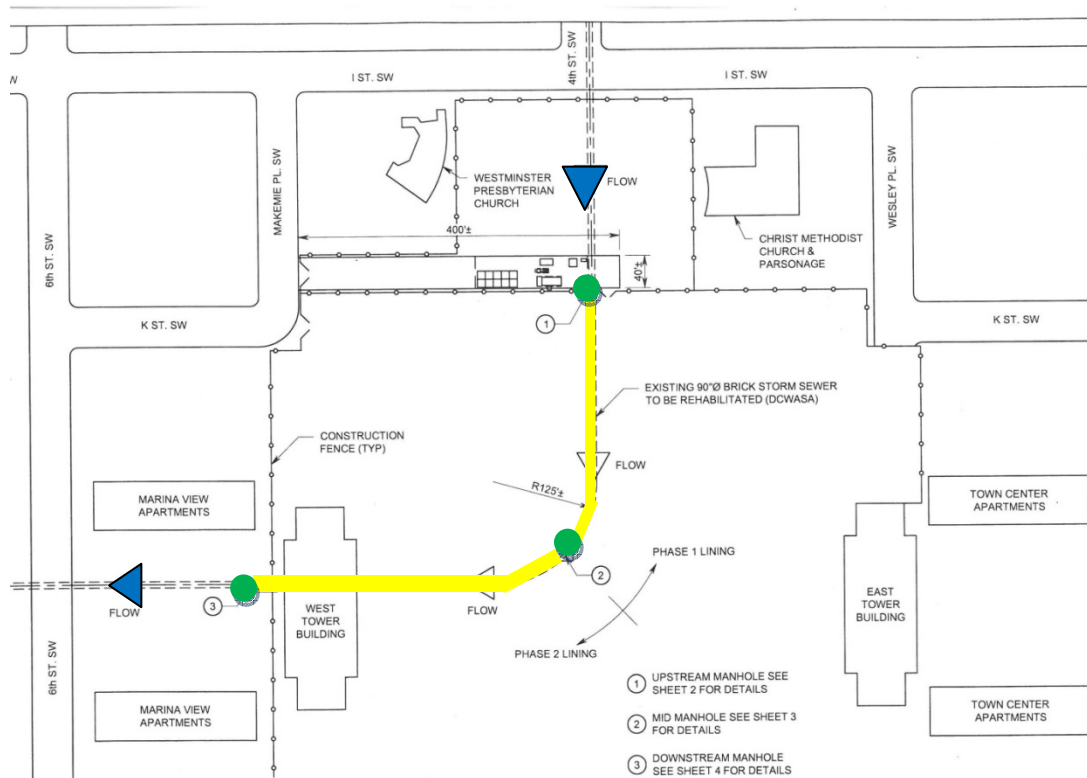
1. This was a very busy construction site with numerous subcontractors and trades working on different aspects of the overall job. This was primarily a building project and rehab of the existing storm sewer was just a necessary evil required to get the project approved. Therefore the rehab contractor was "Low Man on the Totem Pole" when it came to priority to access certain parts of the site. The lay down and work areas were greatly restricted.
2. The existing storm sewer discharged to the Potomac River through a flap gate. Due to a combination of age and debris, the flap gate did not seal well. This is common and is to be expected. However the tidal influence of the River resulted in 2 – 7 feet of standing water always being in the pipe.
3. Even medium size rains could cause the pipe to fill up with storm water with only 10-15 minutes warning.
4. There were no plans of the existing sewer but a limited inspection determined that the sewer was in relatively good condition and the curve had a Radius =  $125 \pm$  feet. The curve was partially a smooth radius and partially made of chords with angle points.

## Site



The project site is at K Street & 4<sup>th</sup> Street SW a little less than a mile southwest of the Capitol.





## Pipe Preparation

The first order of business after mobilization and site move-in in mid July, 2009, was to control the tidal river backwater and the storm water flow. During the preliminary site investigation the depth of water in the sewer was measured at about 2 feet. We discovered that this measurement was taken during an extremely low tide time. The actual depth of standing water in the sewer varied from 2 feet to as much as 7 feet. We made several attempts to control this backwater using a large off-road construction tire tube and then a sand bag weir. We finally settled on using a fabric type inflatable pipe plug that was flexible enough that it could be rolled up and inserted through the manhole. The edges were reinforced and the plug chained to the top of the

downstream manhole. This plug also served to prevent short-circuiting of the ventilation system. Even during dry weather there was a small base flow in the storm sewer. A small sand bag weir and submersible pump was installed at the upstream manhole which was piped to discharge at the downstream manhole.

After the river backwater and pipe base flow were under control and the ventilation system established cleaning of the sewer was accomplished. The debris in the pipe was mostly sand and silt with an occasional brick or chunk of concrete dislodged during the installation of a lateral pipe. About half the debris was removed manually using wheel barrows. The remaining debris was removed using a jet rodder and vector truck. In preparation for the lining, the walls of the sewer were cleaned using a high pressure water blast of 6,000 psi. This removed any dirt, oil, grease, loose mortar, concrete, aggregates, laitance, or other contaminants. What remains is clean competent brick and concrete. There were 8 abandoned services and 1 groundwater leak that were plugged.

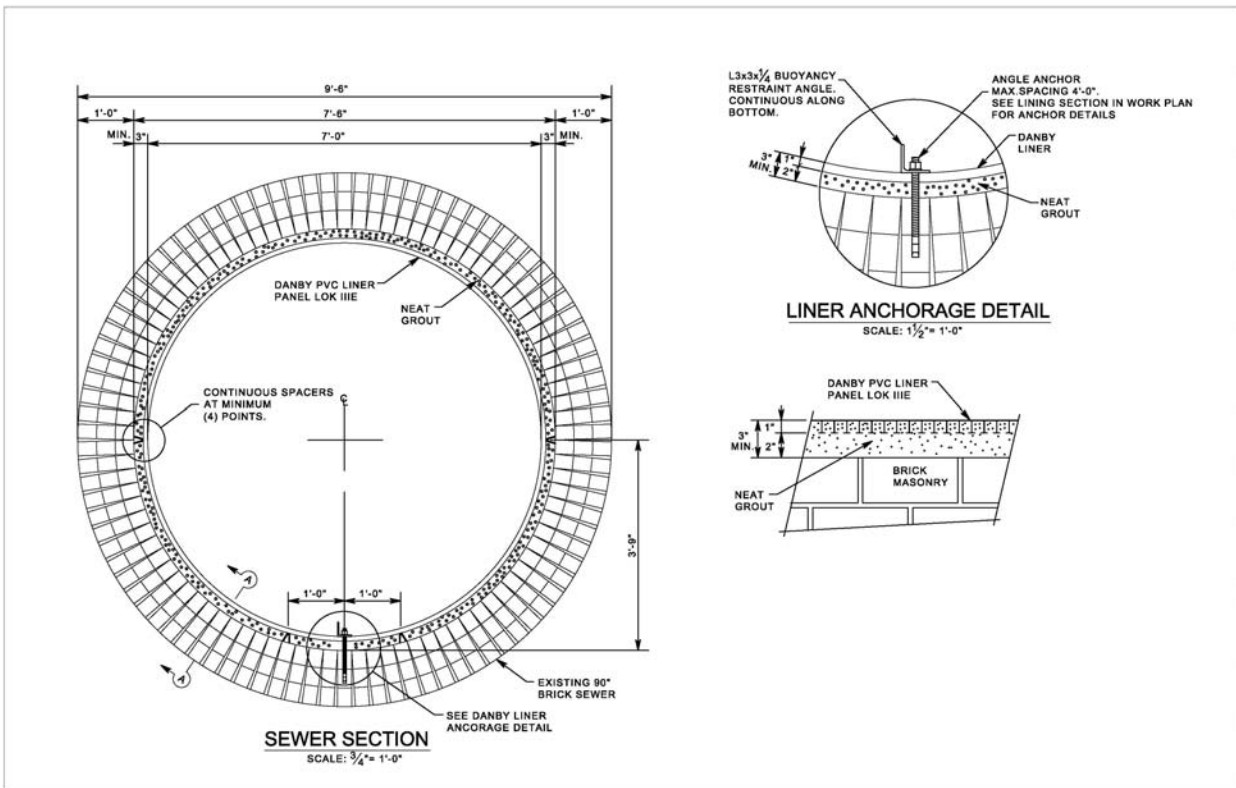
Twice during the cleaning operation there were rain storms. Crews and equipment had to be quickly removed from the sewer and the downstream plug deflated. These events stopped the sewer cleaning for 6 days.



## Liner Installation

As can be seen in the drawings below the 3-inches of grout in the annular space will result in a liner ID of 84-inches. In order to maintain the 3 inch minimum grout thickness, steel spacers (bolsters) are mounted on the pipe wall. The 12-inch wide PVC panels come in 300 foot long coils. The liner is fed into the pipe through the manhole then pulled into position. The panels are spiral wound by connecting the adjacent panels with a Joiner Strip. The Joiner Strip is installed using a pneumatic Palm Hammer. The end of the next coil is connected to the previous one with an "H" Strip splice. A steel buoyancy restraint angle is anchored at the bottom of the liner. Grout bulkheads are placed about every 400 feet using hydraulic cement.

During the liner installation there were several times when storms necessitated evacuating the sewer and delayed the completion of the lining by almost 2 weeks.





## Grout

The PVC liner panels besides being water-tight and corrosion-resistant are essentially the “form” for the high-strength grout. It is the cementitious grout that provides the structural rehabilitation of the pipe. The current state of stress of the existing pipe was determined through a finite element analysis and the minimum grout thickness was calculated using the Flexural Stress Cracking Design Method (Composite Material Design). The grout consists of Portland cement (57%), Fly Ash (43%), and water and super-plasticizer admixture. Although the design is based on a grout compressive strength of 6,000 psi, typically the tested 28 day strength is 7,000 – 9,000 psi. The grout will normally set-up in 4 – 5 hours (firm to the touch) and develop a compressive strength of more than 1,000 psi in 24 hours.

The cement and fly ash are premeasured and pre-mixed and delivered to the job site in 1,000 pound “Super Sacks”. The grout components (full sacks) are introduced into the Colloidal Mixer which uses a high shear pump and baffles to recirculate and thoroughly mix the constituents,

which is done for 8 – 10 minutes. The grout mix is then transferred to the Agitator/Holding Tank. Water then the cement/fly ash blend is added to the Colloidal Mixer for the next batch. The grout mix remains in the Agitator/Holding Tank for up to 10 minutes where it is mechanically agitated to maintain the mixture in suspension. The grout is pumped through a progressive cavity pump into the pipe to the injection point. The grout is very fluid (18 – 25 second Standard Flow Cone).

The liner is grouted in 8 lifts of about 12- inches each. Grout and vent holes are drilled in the liner about every 20 feet. The grout hose discharges into the grout hole and the mixture flows by gravity into the annular space between the liner panels and the host pipe. When grout starts flowing out of the vent hole, the hole is plugged and the hose is move to the next grout hole. The next grout lift is placed a minimum of 12 hours after the previous lift is completed.



That is the sequence of operations if the work is progressing according to the Work Plan. In anticipation of the project, Boyer located a local supplier of cement products in the DC area. This was part of a large nation supply company. Boyer obtained samples of the cement and fly ash and tested these materials in Houston, Texas and the results were as required.

### **From Good to Bad to Worse**

On the first day of the grouting operation, the grout flash set, which was never a problem on previous jobs. Initially we thought there was some problem with the pump, but the next day we found some rocks, pebbles and clumps of set-up cement in the mix. The mix is supposed to contain only cement and fly ash; no aggregates. We installed a screen at the transfer hose from the mixing to holding tank and started catching rocks, pebbles and cement clumps which was



causing the hose to clog up. The supplier was informed of this problem and they promised to investigate.

Once this problem was solved, random batches of the grout started flash setting. The grout is normally mixed for about 8 to 10 minutes in the colloidal mixer then transferred to the holding/agitator tank where it normally stays less than 10 minutes while it is being pumped out to the point of use. The grout normally sets-up (firm to the touch) in 4 to 5 hours and develops more than 1,000 psi compressive strength in 24 hours. On two separate occasions 5 batches had to be pumped out and wasted into a wooden box because of flash setting in the holding tank in 5 to 10 minutes. The supplier was again informed about this problem.

While grouting the 3<sup>rd</sup> Lift of the first section the liner buckled. The reason for this was the grout in the first and second lifts had not set, even after 36 and 12 hours respectively. This allowed the liquid grout in the upper lift to migrate downward where it exerted an excessive hydrostatic force on the lower sections of liner causing buckling. Because of the inadequacy of the grout and the buckled liner, Boyer decided to remove the liner and grout installed for the first 300 feet. Testing of the defective grout showed that it did not meet our required strength requirements. New liner was reinstalled for that section. Removing the liner and grout was a tedious process that entailed cutting out the liner and then removing the hardened grout in pieces using a jack hammer.

The primary issue with the cement/fly ash blend was the inconsistency of material and apparent deficiencies in the QA/QC at the supplier's plant. The initial mix supplier was given several opportunities to explain the reasons for the problems and correct the deficiencies. This was not accomplished to our satisfaction. We changed the supplier for the cement/fly ash blend and have not experienced any problems with grout quality since.



## Conclusions

This project had many challenges, both expected and unanticipated. Between the grout problems, removal and replacement of liner and grout and 18 rain days, the job took twice as long to complete than was planned. Unfortunately from the standpoint of cost, this was not a profitable job. However, the contractor, Boyer, Inc. was professional and did the right thing and corrected any shortcomings at his own expense even though the problems were caused by circumstances beyond his control. In the end, the Owner got a rehabilitated 100 year old sewer whose service life has been extended for probably another 100 years. Sometimes construction projects don't progress as originally planned. Even though this job became a major nuisance we are proud of the way we addressed the problems and the resulting quality of the finished product.

Boyer, Inc. was presented with the award for "Craftsmanship" for this project from the Washington Builders Congress. This paper appeared as an article on Rehab Technology in the July 2010 issue of Underground Construction Magazine.

For more information contact:

Michael Spero, P.E.

President

Danby, LLC

281-598-1126

[mspero@danbyrehab.com](mailto:mspero@danbyrehab.com)

[www.danbyrehab.com](http://www.danbyrehab.com)

Datta Shirodkar, P.E.

Project Manager

Boyer, Inc.

713-466-5395

[dshirodkar@boyerinc.com](mailto:dshirodkar@boyerinc.com)

[www.boyerinc.com](http://www.boyerinc.com)